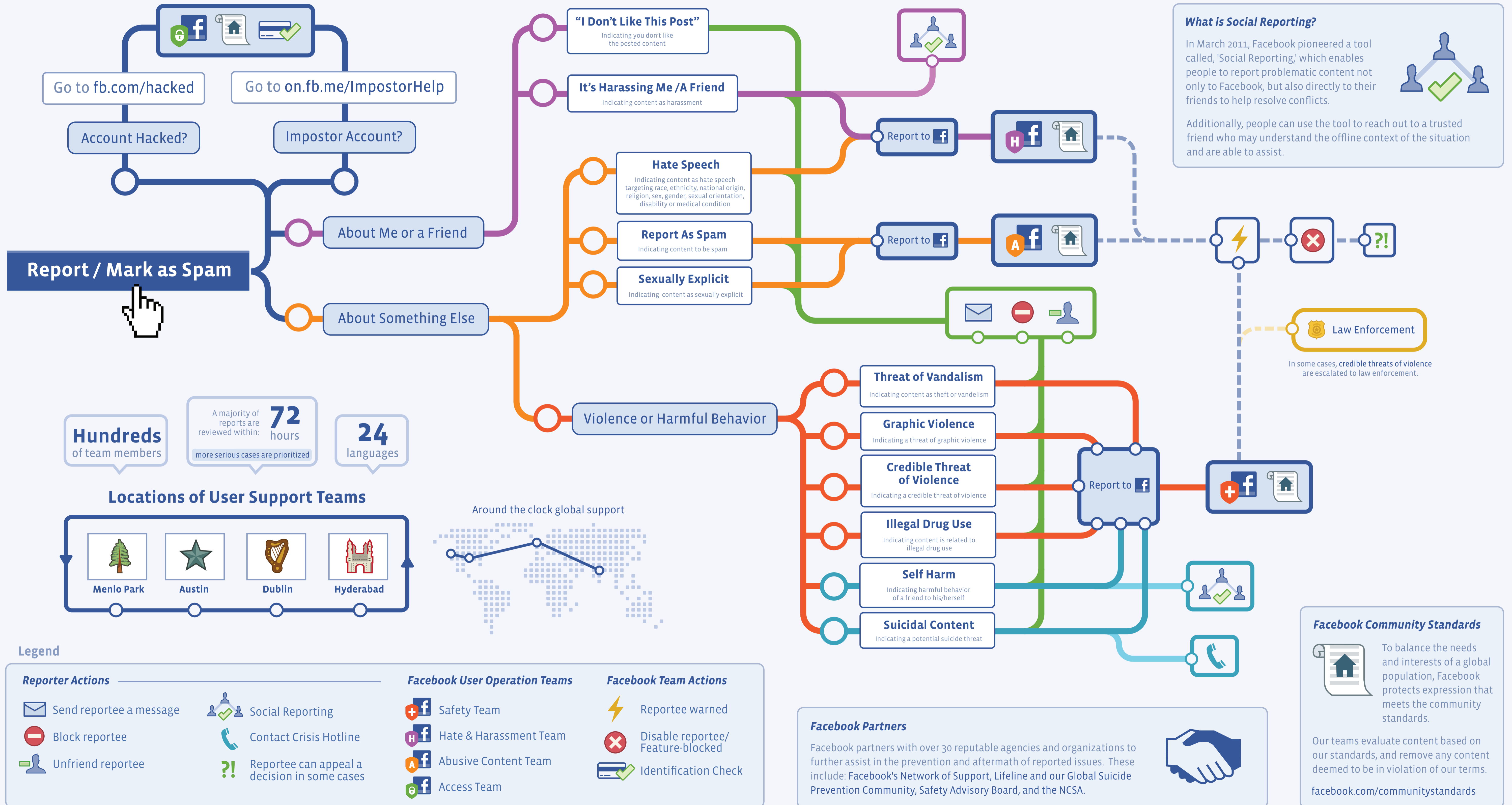


At Facebook, nothing is more important than the safety and security of the people who use our service. With a community of over 901 million people, Facebook maintains a robust reporting infrastructure made up of dedicated teams all over the world and innovative technology systems.



What is Social Reporting?

In March 2011, Facebook pioneered a tool called, 'Social Reporting,' which enables people to report problematic content not only to Facebook, but also directly to their friends to help resolve conflicts.

Additionally, people can use the tool to reach out to a trusted friend who may understand the offline context of the situation and are able to assist.

Facebook Community Standards

To balance the needs and interests of a global population, Facebook protects expression that meets the community standards.

Our teams evaluate content based on our standards, and remove any content deemed to be in violation of our terms.

facebook.com/communitystandards

Legend

Reporter Actions	Facebook User Operation Teams	Facebook Team Actions
<ul style="list-style-type: none"> Send reportee a message Block reportee Unfriend reportee 	<ul style="list-style-type: none"> Safety Team Hate & Harassment Team Abusive Content Team Access Team 	<ul style="list-style-type: none"> Reportee warned Disable reportee/Feature-blocked Identification Check

Facebook Partners

Facebook partners with over 30 reputable agencies and organizations to further assist in the prevention and aftermath of reported issues. These include: Facebook's Network of Support, Lifeline and our Global Suicide Prevention Community, Safety Advisory Board, and the NCSA.